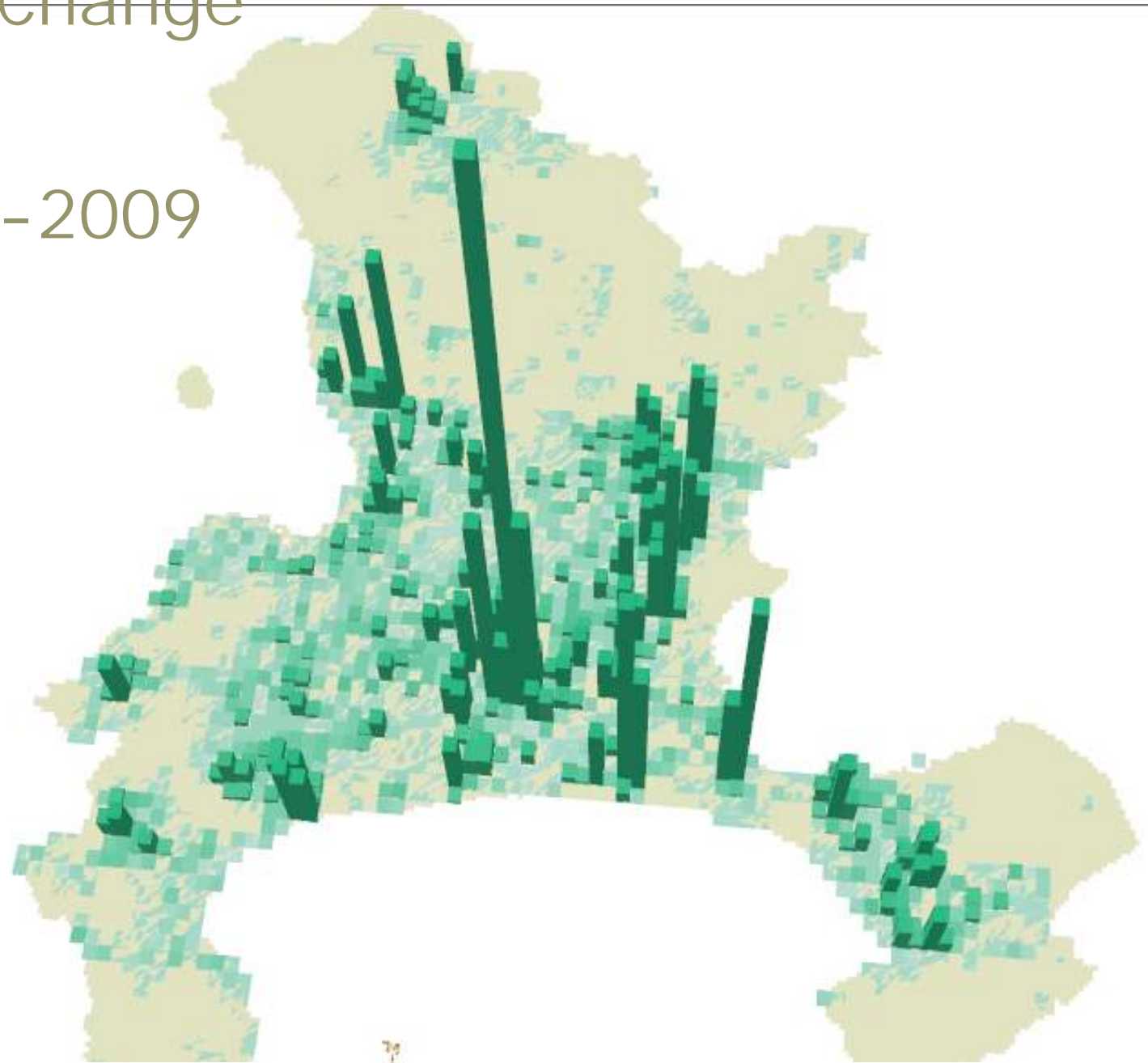


# Cape Town : Change in erven unit density 2004-2009



The height of the bars indicates the extent to which the block contains erven first registered between 2004- 2009

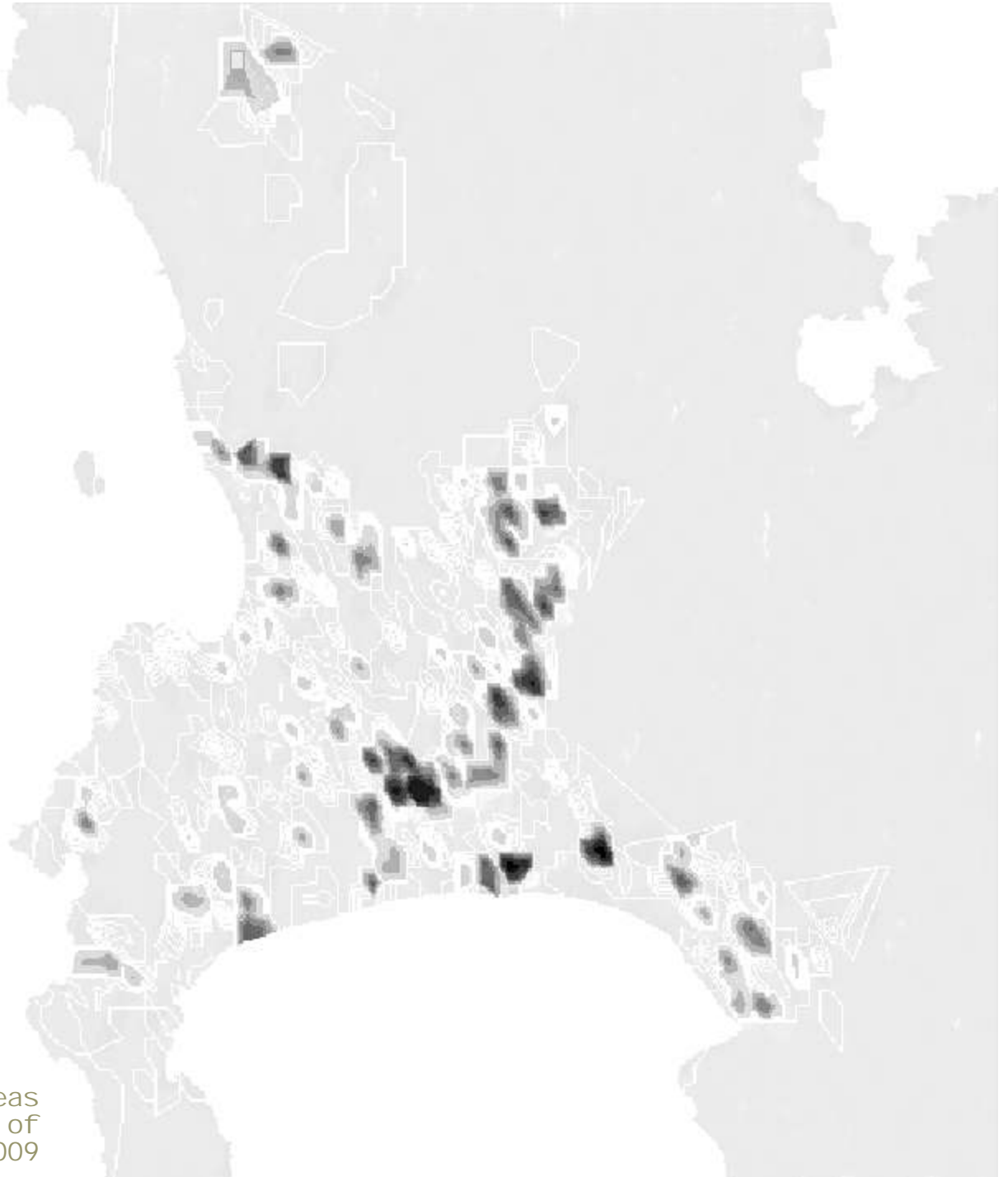


## 3D Representation

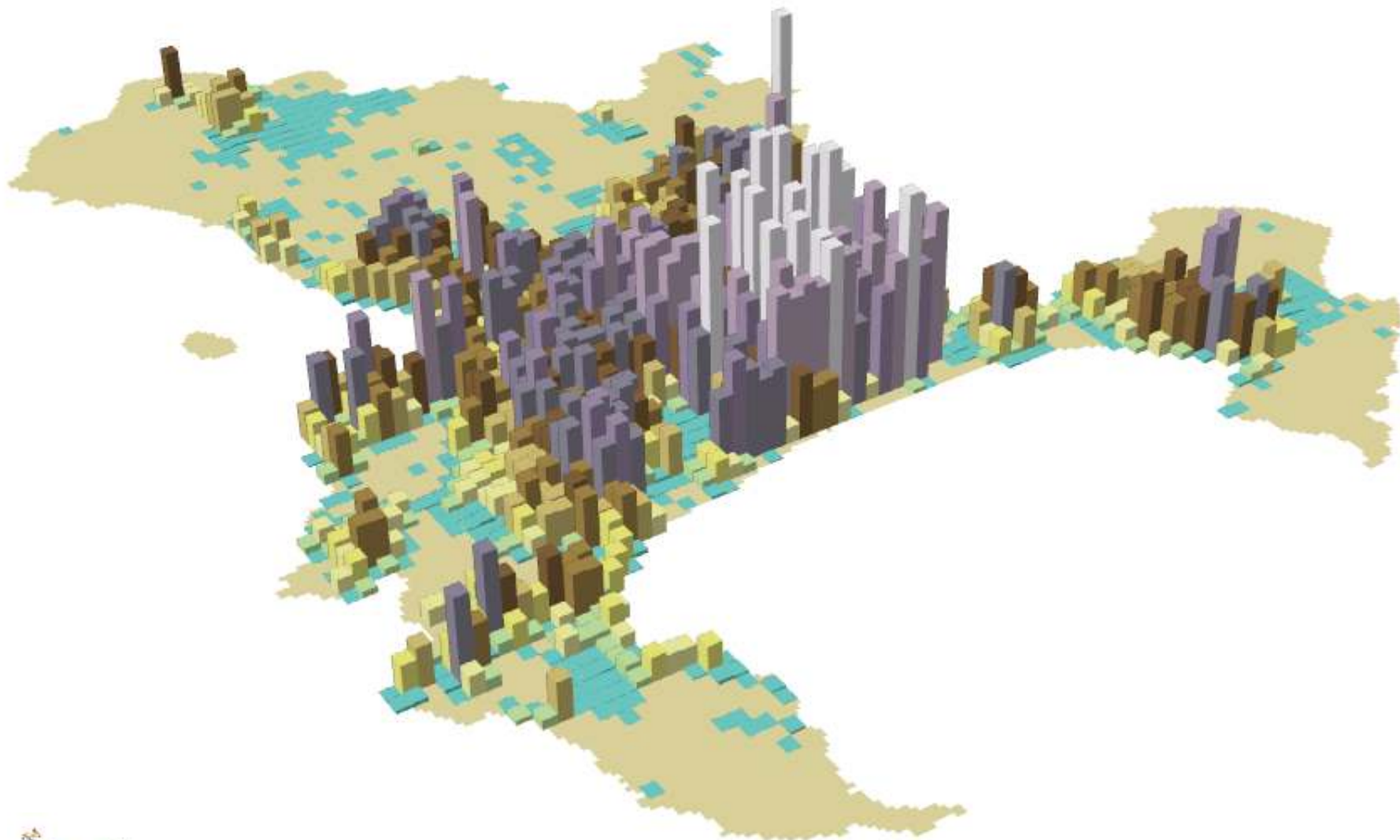


# 2D Contour Map

The 'hotspots' indicates areas with a high concentration of erven first registered between 2004-2009



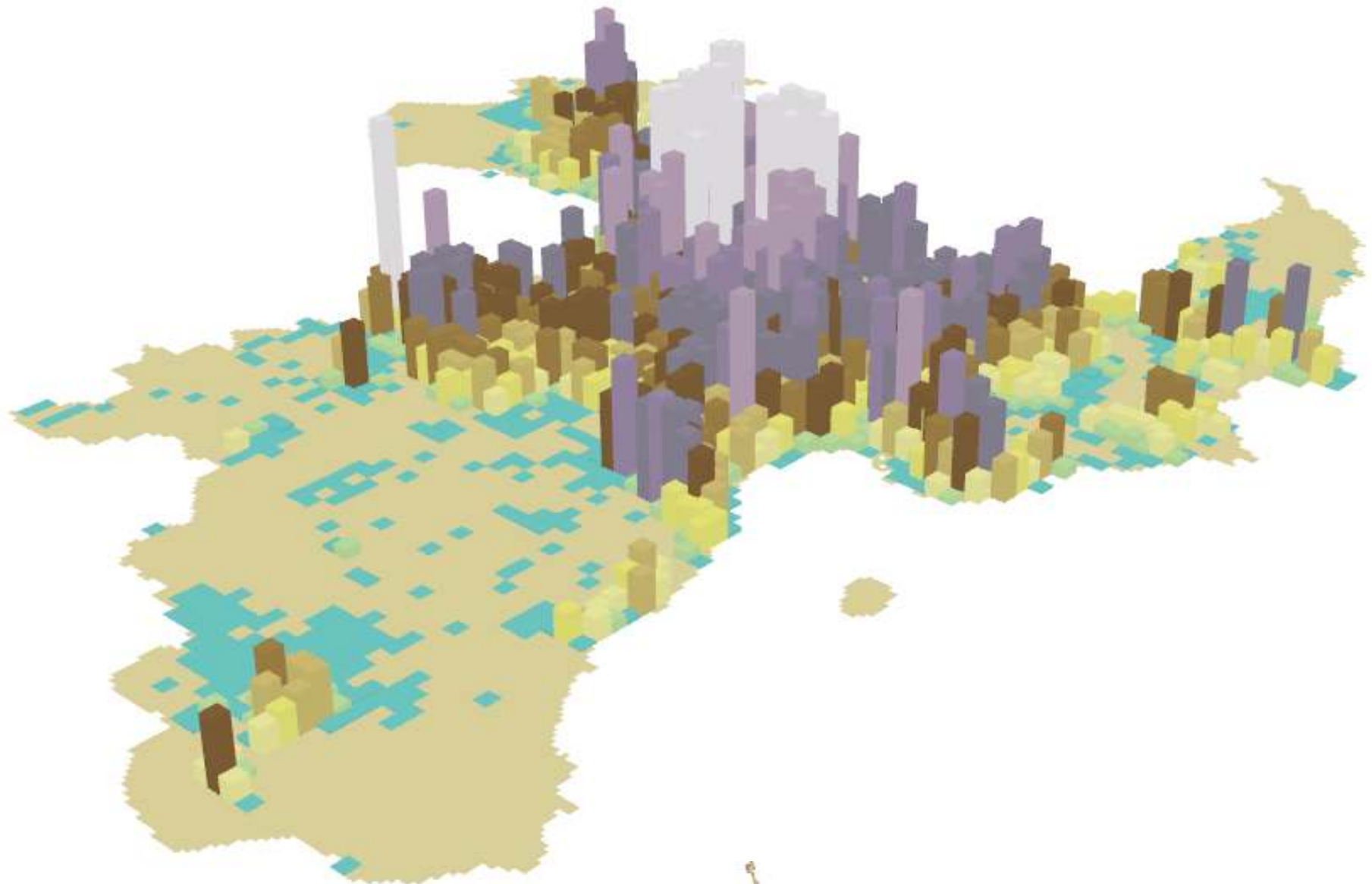
# 2009 Erven Densiti y: View 1



3D Representati on

The higher / more white the bar, the higher the concentration of total erven within that block

# 2009 Erven Densiti y: Vi ew 2



The higher / more white the bar, the higher the concentration of total erven within that block



## 3D Representati on