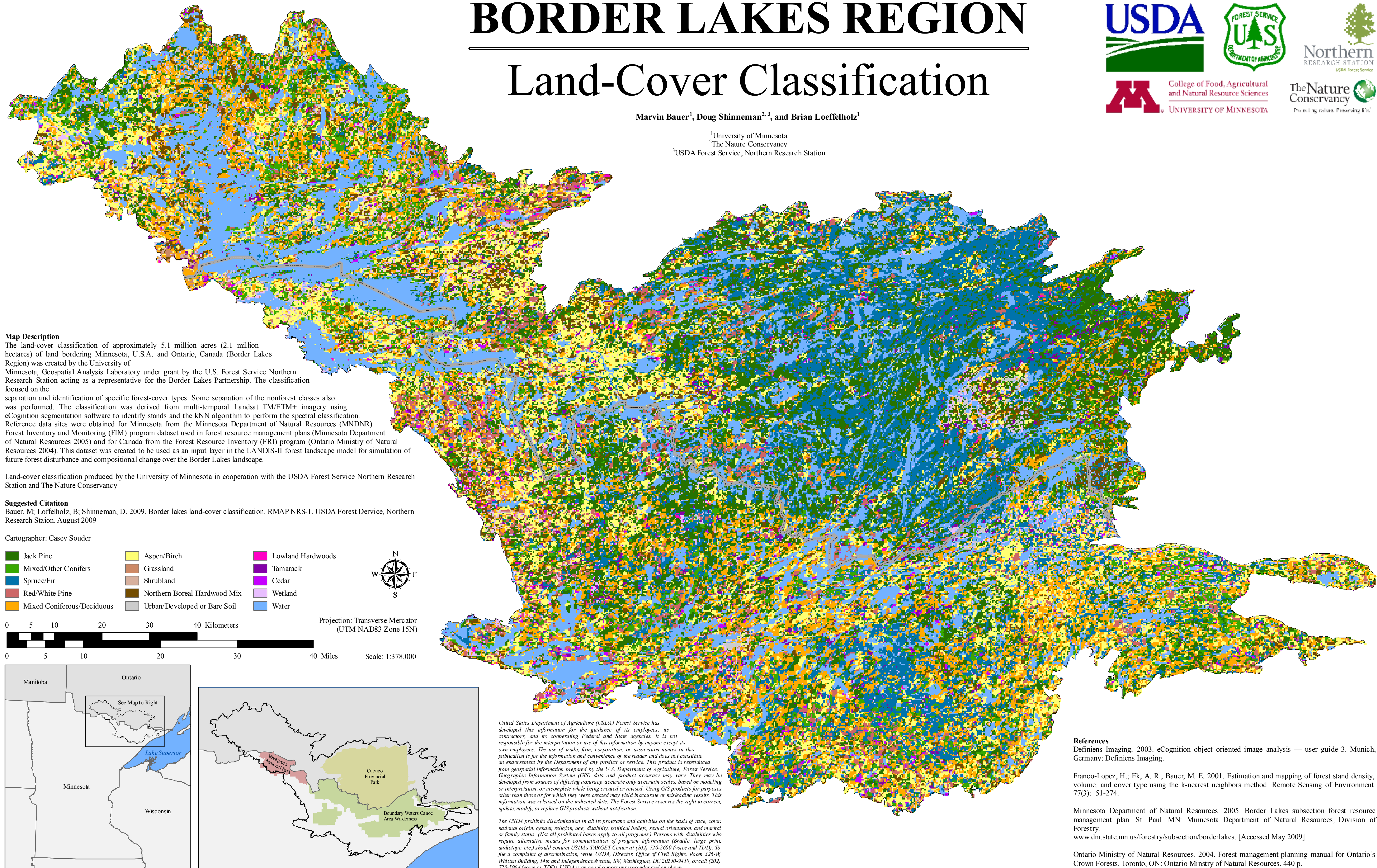


BORDER LAKES REGION

Land-Cover Classification

Marvin Bauer¹, Doug Shinneman^{2,3}, and Brian Loeffelholz¹

¹University of Minnesota
²The Nature Conservancy
³USDA Forest Service, Northern Research Station



Map Description

The land-cover classification of approximately 5.1 million acres (2.1 million hectares) of land bordering Minnesota, U.S.A. and Ontario, Canada (Border Lakes Region) was created by the University of Minnesota, Geospatial Analysis Laboratory under grant by the U.S. Forest Service Northern Research Station acting as a representative for the Border Lakes Partnership. The classification focused on the separation and identification of specific forest-cover types. Some separation of the nonforest classes also was performed. The classification was derived from multi-temporal Landsat TM/ETM+ imagery using eCognition segmentation software to identify stands and the kNN algorithm to perform the spectral classification. Reference data sites were obtained from Minnesota from the Minnesota Department of Natural Resources (MNDNR) Forest Inventory and Monitoring (FIM) program dataset used in forest resource management plans (Minnesota Department of Natural Resources 2005) and for Canada from the Forest Resource Inventory (FRI) program (Ontario Ministry of Natural Resources 2004). This dataset was created to be used as an input layer in the LANDIS-II forest landscape model for simulation of future forest disturbance and compositional change over the Border Lakes landscape.

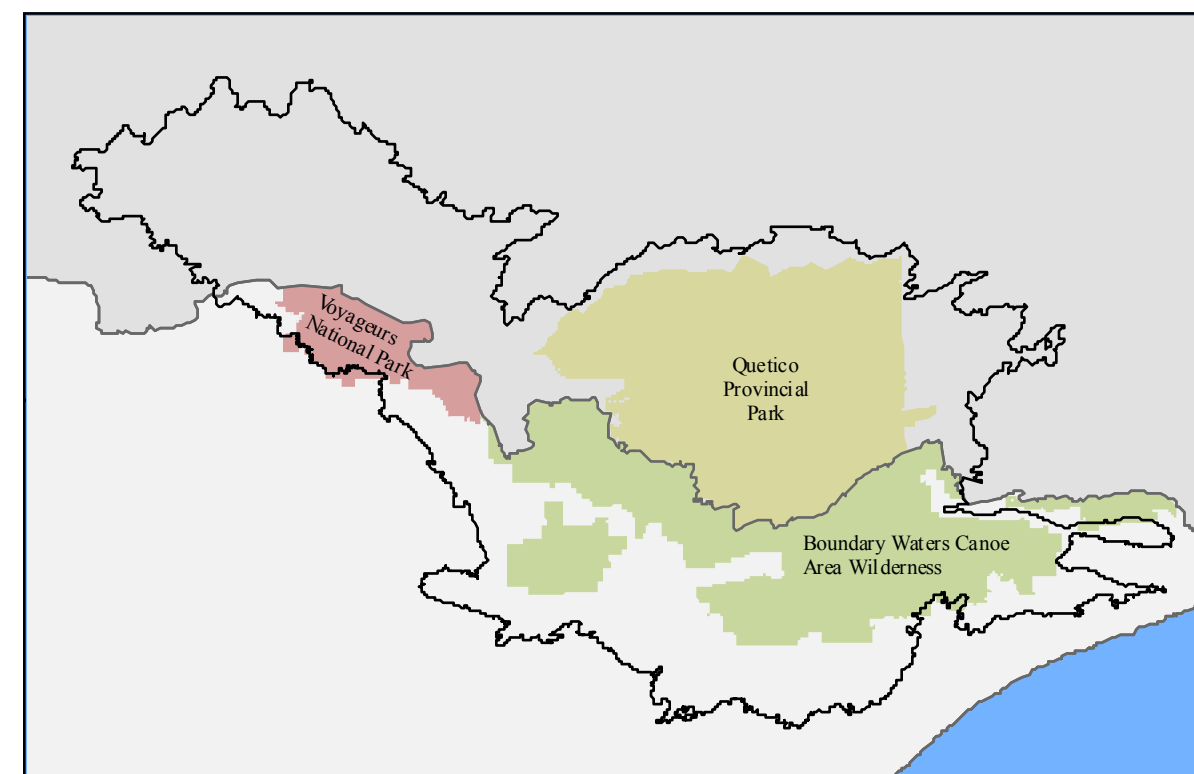
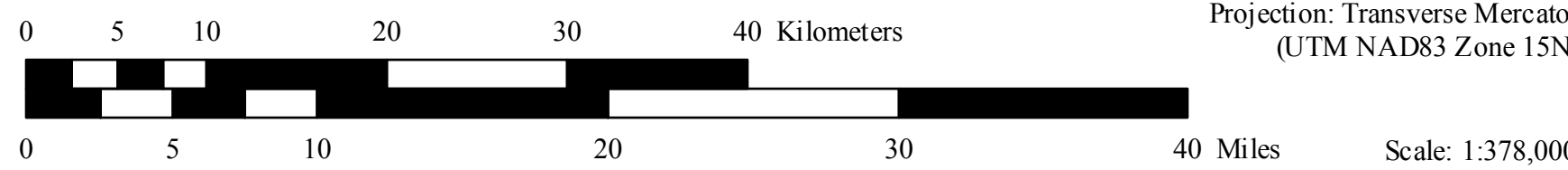
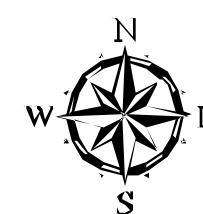
Land-cover classification produced by the University of Minnesota in cooperation with the USDA Forest Service Northern Research Station and The Nature Conservancy

Suggested Citation

Bauer, M.; Loeffelholz, B.; Shinneman, D. 2009. Border lakes land-cover classification. RMAP NRS-1. USDA Forest Service, Northern Research Station. August 2009

Cartographer: Casey Souder

- | | | |
|----------------------------|------------------------------|-------------------|
| Jack Pine | Aspen/Birch | Lowland Hardwoods |
| Mixed/Other Conifers | Grassland | Tamarack |
| Spruce/Fir | Shrubland | Cedar |
| Red/White Pine | Northern Boreal Hardwood Mix | Wetland |
| Mixed Coniferous/Deciduous | Urban/Developed or Bare Soil | Water |



United States Department of Agriculture (USDA) Forest Service has developed this information for the guidance of its employees, its contractors, and its cooperating Federal and State agencies. It is not responsible for the interpretation or use of this information by anyone except its own employees. The use of trade, firm, corporation, or association names in this publication is for the information and convenience of the reader and does not constitute an endorsement by the Department of any product or service. This product is reproduced from geospatial information prepared by the U.S. Department of Agriculture, Forest Service, Geographic Information System (GIS) data and product accuracy may vary. They may be developed from sources of differing accuracy, accurate only at certain scales, based on modeling or interpretation, or incomplete while being created or revised. Using GIS products for purposes other than those for which they were created may yield inaccurate or misleading results. This information was released on the indicated date. The Forest Service reserves the right to correct, update, modify, or replace GIS products without notification.

The USDA prohibits discrimination in all its programs and activities on the basis of race, color, national origin, gender, religion, age, disability, political beliefs, sexual orientation, and marital or family status. (Not all prohibited bases apply to all programs.) Persons with disabilities who require alternative means for communication of program information (Braille, large print, audiotape, etc.) should contact USDA's TARGET Center at (202) 720-2600 (voice and TDD). To file a complaint of discrimination, write USDA, Director, Office of Civil Rights, Room 326-W, Whitten Building, 14th and Independence Avenue, SW, Washington, DC 20250-9410, or call (202) 720-5964 (voice or TDD). USDA is an equal opportunity provider and employer.

References

- Definiens Imaging. 2003. eCognition object oriented image analysis — user guide 3. Munich, Germany: Definiens Imaging.
- Franco-Lopez, H.; Ek, A. R.; Bauer, M. E. 2001. Estimation and mapping of forest stand density, volume, and cover type using the k-nearest neighbors method. *Remote Sensing of Environment*. 77(3): 51-274.
- Minnesota Department of Natural Resources. 2005. Border Lakes subsection forest resource management plan. St. Paul, MN: Minnesota Department of Natural Resources, Division of Forestry. www.dnr.state.mn.us/forestry/subsection/borderlakes. [Accessed May 2009].
- Ontario Ministry of Natural Resources. 2004. Forest management planning manual for Ontario's Crown Forests. Toronto, ON: Ontario Ministry of Natural Resources. 440 p.